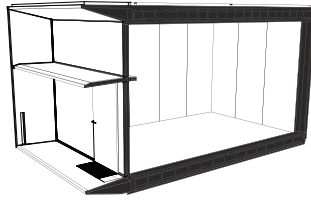


KODABY KODASEMA



KODA Light by Kudasema
minimum equipment

instant. multifunctional. movable. zen.



KODA Light in black plywood



timber



zinc



cement fiber board

“ One of the most innovative homes of 2016 ”
Business Insider

Models

Product name	KODA Light minimum equipment
Project status	Available for purchase
KODA Light for Living	KODA house with a 3,8 m ² / 40.9 ft ² terrace can fit all necessities for living or a vacation home.
KODA Light Stay	KODA houses can be adjusted as a hotel room. See a functioning system here: http://www.kodastay.com/
KODA Light for Working, Learning, Retail, etc.	KODA units can be adjusted and used as a working space, retail, cafe, classroom, etc.



This 3D rendering is illustrative. For full list of equipment, please see the price list.

KODA is a perfect urban infill unit.

Combined together KODA houses create a vibrant mixture of homes and hotels, offices, cafés, co-working spaces, service spots and shops, and a community area in a snap.



Technical

DIMENSIONS

External

L 7233, W 3930, H 3985 mm / L 23.7, W 12.9, H 13.1 ft

Internal

L 5870, W 3392, H 3263 mm / L 19, W 11.1, H 10.7 ft

Terrace

L 1062, W 3730 mm / L 3.5, W 12.2 ft

AREA OF ROOMS

Internal

19.7 m² / 212.0 ft²

Terrace

3.8 m² / 40.9 ft²

Internal volume

64.97 m³ / 2294 ft³

Weight

ca. 11.5 tons

Construction materials

Wood, glass, steel

Transportation and installation

KODA Light is transportable via trailer in one piece and just needs a crane to fit it to the place. Installation and connecting to communications takes less than a day. No need for laying foundation, it is integrated, ground with levelled footing and sufficient weight-bearing capacity is enough. Although KODA Light needs support under walls.

Equipment

This version of KODA Light has no heating or ventilating system. The house is equipped with electrical cables in the finished walls.

Heat insulation

The initial offer includes 200mm mineral wool layer of insulation in walls and 250mm in ceiling and floor. The U-value for walls is 0.211 W/m²K, for ceiling U-value is 0.145 W/m²K and for floor U-value is 0.144 W/m²K. The U-value of KODA Light 's three-ply glass facade is 0.73 W/m²K.

Energy supply

Electrical grid

Required connections

Water, electrical grid, sewerage



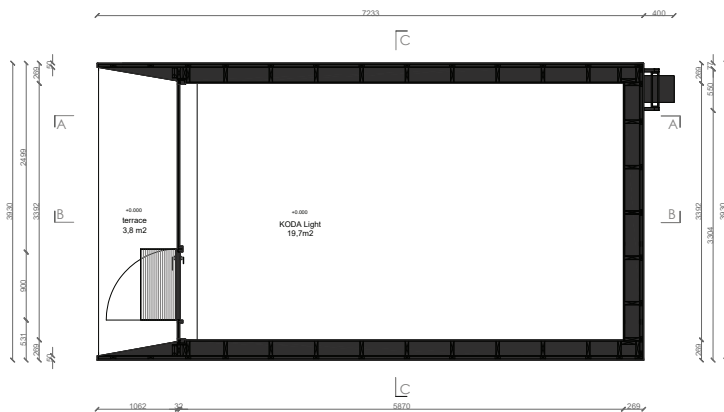
World Architecture Festival 2016:
SMALL PROJECT PRIZE FINALIST
2017:
SCHOOLS FINALIST



WAN Urban Challenge 2017:
London Housing
COMPETITION WINNER

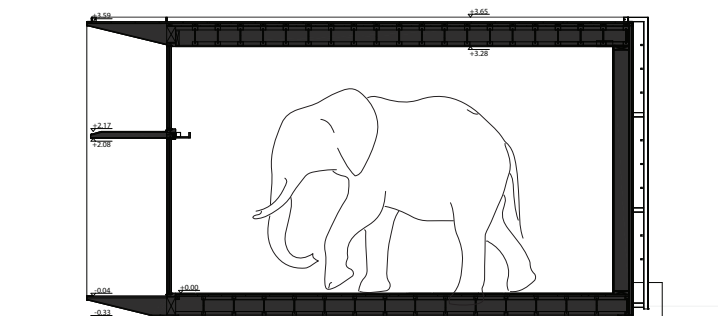


American Architecture Prize 2016:
SILVER MEDAL FOR INTERIOR
2017:
HOSPITALITY ARCHITECTURE &
URBAN DESIGN WINNER



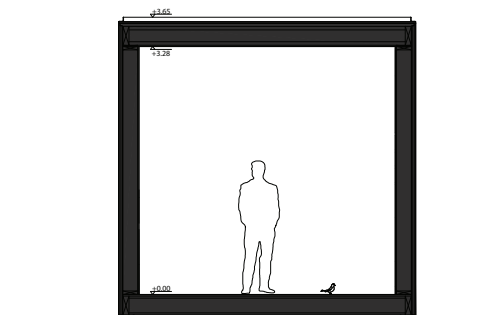
Ground floor plan M 1:100 / A4

Section BB



Section B-B M 1:100 / A4

Section CC



Section C-C M 1:100 / A4